

TO LET

**Azof Street,
Greenwich, SE10**

£1,450 pcm

Well Presented Spacious One
bedroom Upper Flat
Unfurnished





Description

Hindwoods are delighted to present to the market this one bedroom first floor flat with double glazing and gas central heating. Situated between Banning Street and Blackwall Lane being with a mile of both North Greenwich Underground station and Westcombe Park mainline station.

The accommodation comprises:-

Entrance Hall

Built in cupboards.

Lounge

15'9" x 14'6" (4.77m x 4.44m). Double glazed windows to bay. Radiator.

Bedroom

12' x 10' (3.66m x 3.05m). Ornate fireplace. Double glazed window. Radiator. Built in cupboard.

Separate W.C.

Low level W.C. Double glazed window.

Shower Room

Shower cubicle. Hand basin with vanity unit under. Part tiled walls.

Kitchen

13'6" x 10'3" (4.13m x 3.16m). Range of wall and base units with inset stainless steel sink and worktop surfaces. Built in oven, hob and cooker hood. Part tiled walls. Double glazed windows to bay. Radiator. Wall mounted boiler.

RENT: £1,450 PER CALENDAR MONTH EXCLUSIVE

Viewing

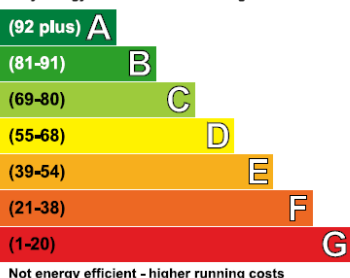
Strictly via sole agents Hindwoods.

Donna Distin

d.distin@Hindwoods.co.uk

Energy Efficiency Rating

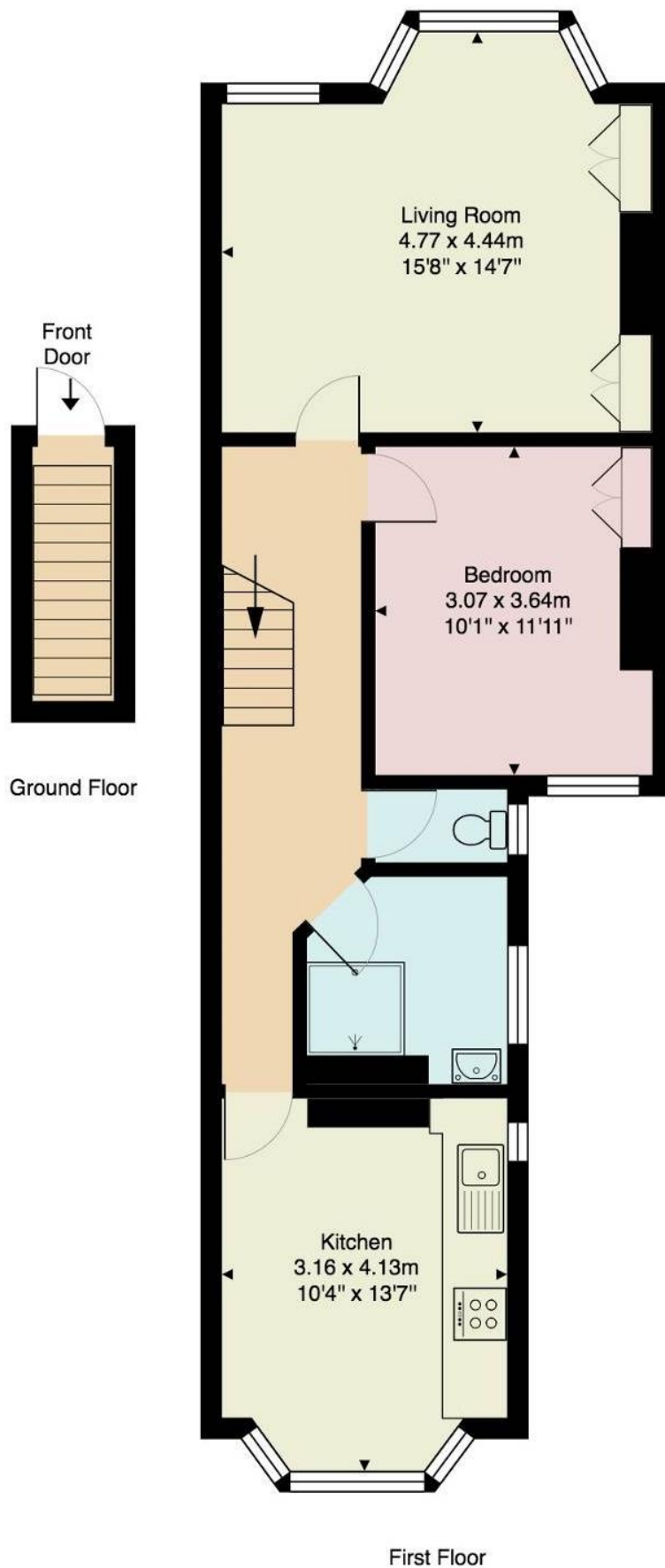
Very energy efficient - lower running costs



| Current | Potential |
|---------|-----------|
| 70 | 77 |



Azof Street



Gross Internal Area: 63.2 m² ... 681 ft²

All measurements are approximate and for display purposes only.

