

TO LET

**Footscray Road,
New Eltham,
London, SE9**

**One bedroom Flat –
Unfurnished**

£1,250 PCM





Description

Hindwoods are delighted to welcome to the market this well presented one bedroom flat. Situated close to the junction with Thaxted Road and within half a mile of New Eltham station.

The accommodation comprises: -

Lounge

15'5" x 8'10"

Period fireplace. Double radiator. Double glazed window. Newly fitted carpet.

Kitchen

7'5" x 7'6"

A Range of newly fitted wall and base units, stainless steel sink and worktop surfaces. Built in oven, hob and extractor hood. Washing machine. Fridge/freezer. Tiled splashback. Double glazed window.

Separate W.C.

Low level W.C. window.

Bathroom

Panelled bath with wall shower, shower screen and mixer tap. Pedestal hand basin. Part tiled walls. Double glazed window.

Bedroom

12'6" x 11'3" (3.81m x 3.43m).

Newly fitted carpet. Radiator. Double glazed window.



15/03/2021 Energy performance certificate (EPC) - Find an energy certificate - GOV.UK

Score	Energy rating	Current	Potential
92+	A		
81-91	B		
69-80	C		76 C
55-68	D	66 D	
39-54	E		
21-38	F		
1-20	G		

HINDWOODS
hindwoods.co.uk
020 8858 9303

Viewing

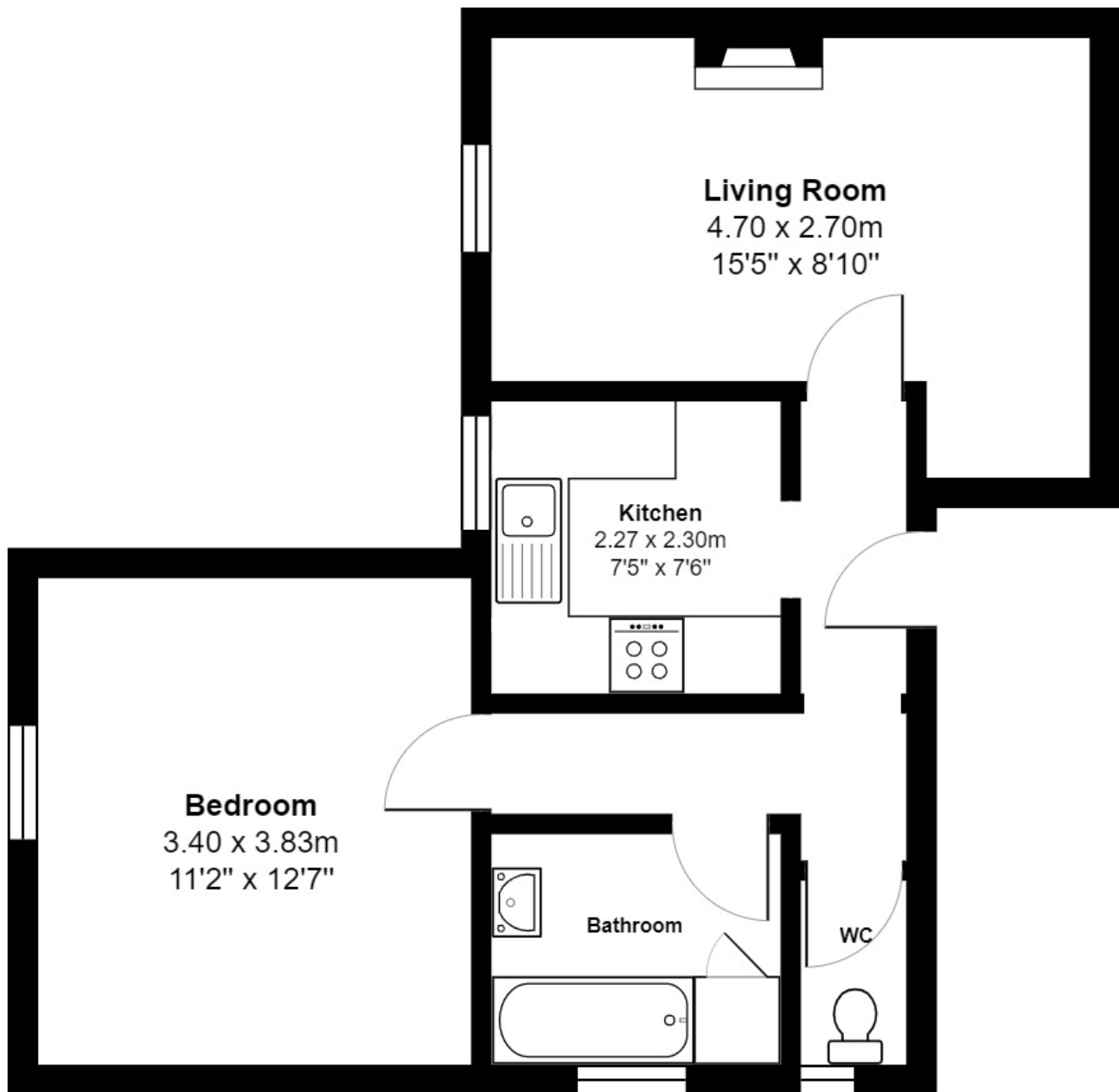
Strictly via sole agents Hindwoods.

Donna Distin

D.Distin@Hindwoods.co.uk



F 4, 461 Footscray Rd,



Total Area: 45.0 m² ... 484 ft²

All measurements are approximate and for display purposes only