

TO LET

Park Mansions, Greenwich, SE10

£2,000 pcm

Well presented 2 Bedroom Top
Floor Flat Unfurnished





Description

Hindwoods are delighted to offer to the market this well presented two-bedroom top floor flat, with a communal roof terrace. Ideally located on the corner of Prior Street and Circus Street, close to the centre of historic Greenwich with its popular bars, restaurants, and Royal Park. The Docklands Light Railway and Greenwich mainline station are also nearby.

Communal front door with stairs leading up to

TOP FLOOR

The accommodation comprises: -

Entrance Hall

Entryphone, Carpeted.

Kitchen

11'5" x 9'2 (3.48m x 2.80m). Range of high gloss wall and base units with wood effect work surface and insert stainless steel sink. Integrated gas hob with electric oven and extractor hood. Tiled splash backs. Fridge freezer. Single glazed sash window. Washing machine. Wood laminate flooring. Inset ceiling lights.

Separate WC

Lounge

13'11 x 12'1" (4.23m x 3.72m). Wall lights. Radiator. Fireplace. Sash Windows. Carpet

Bedroom 1

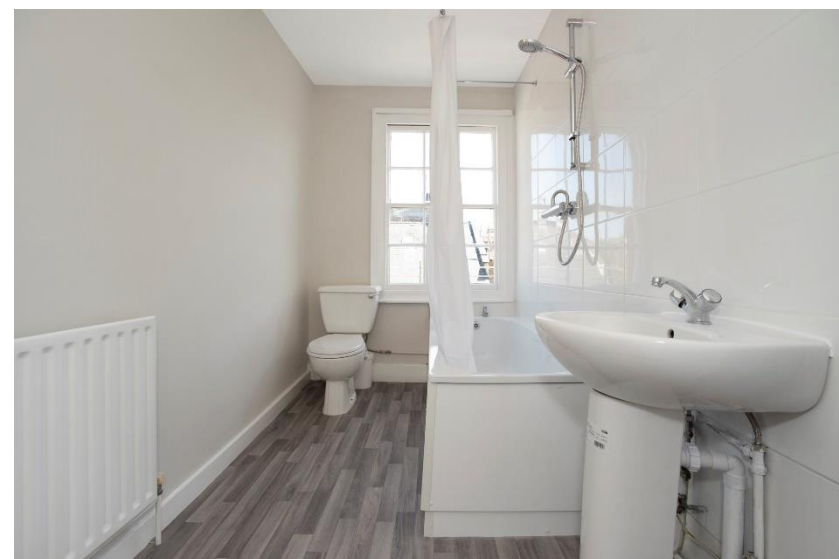
10'9" x 11'5" (3.27m x 3.47m). Inset ceiling lights. Radiator. Sash Windows. Carpet

Bedroom 2

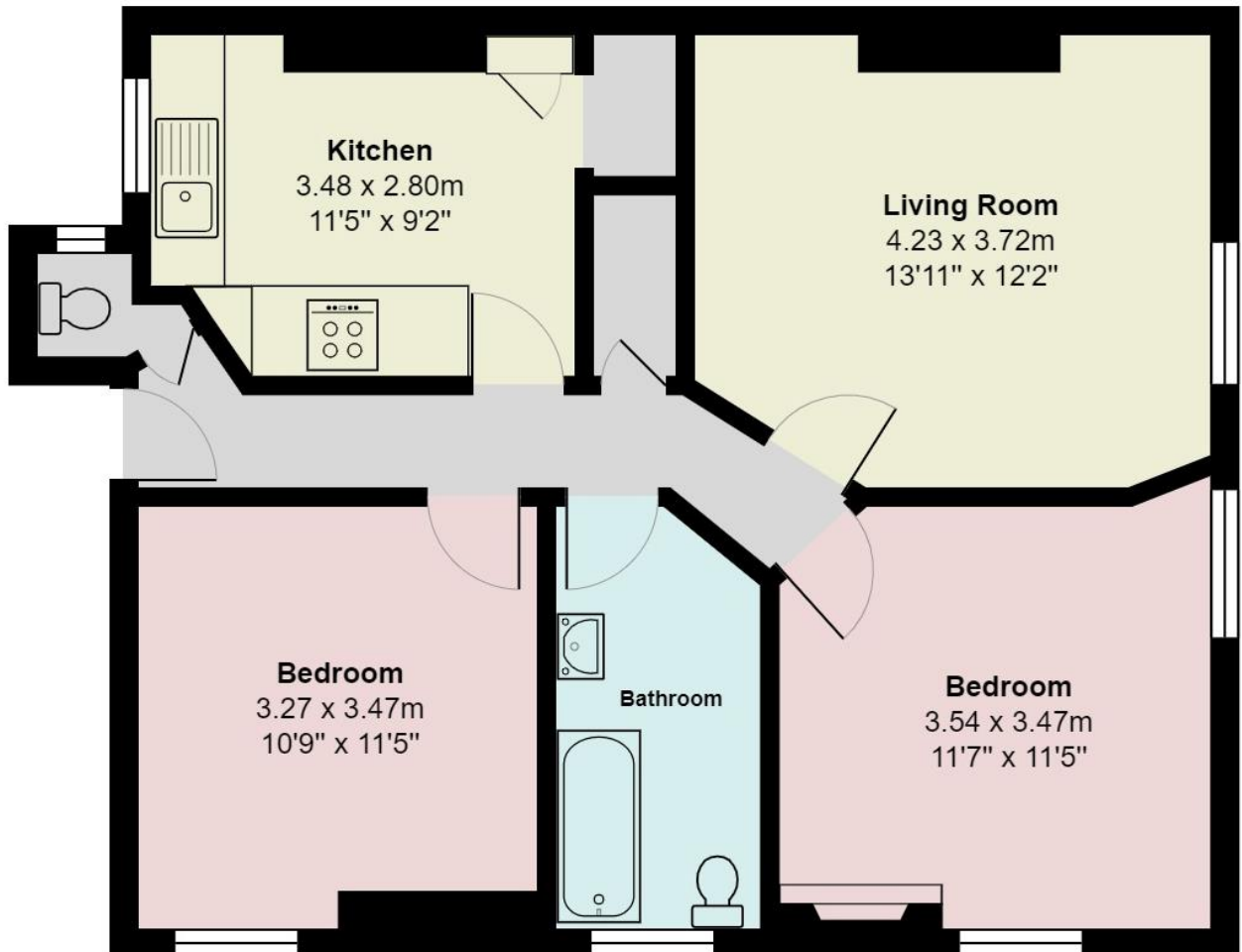
11'7" x 11'5" (3.54m x 3.47m). Inset ceiling lights. Radiator. Sash Windows. Carpet

Bathroom

White suite comprising of low level WC, pedestal wash hand basin and bath with shower over. Vinyl wood effect flooring.



Flat 3, Park Mansions, Prior Street,



Gross Internal Area: 65.2 m² ... 702 ft²

Disclaimer: Floor Plan measurements are approximate and are for illustrative purposes only. While we do not doubt the floor plans accuracy, we make no guarantee, warranty or representation as to the accuracy and completeness of the floor plan. You or your advisors should conduct a careful, independent investigation of the property to determine to your satisfaction as to the suitability of the property for your space requirements. Floor Plan sketched by Property Gold Marketing.