



TO LET

New Belmont House, Forest Hill, SE23

£1,400 pcm

Well Presented 1 Bedroom First
Floor Flat - Unfurnished





Description

A freshly redecorated first floor flat with new flooring in a modern three floor detached block with brick faced front elevation under tiled roof..

Situated at the corner of Manor Mount and Pear Avenue, which is off the main London Road and within half a mile of Forest Hill Station.

The accommodation comprises

Entrance Hall

Two built in cupboards. Radiator. Entryphone.

Living Room

13'6" x 10' 3" (4.11m x 3.12m). Sash windows to two aspects. Grey wood flooring. Radiator.

Bedroom

12'6" x 10'6" (3.81m x 3.20m). Two sash windows. Grey wood flooring. Radiator.

Kitchen

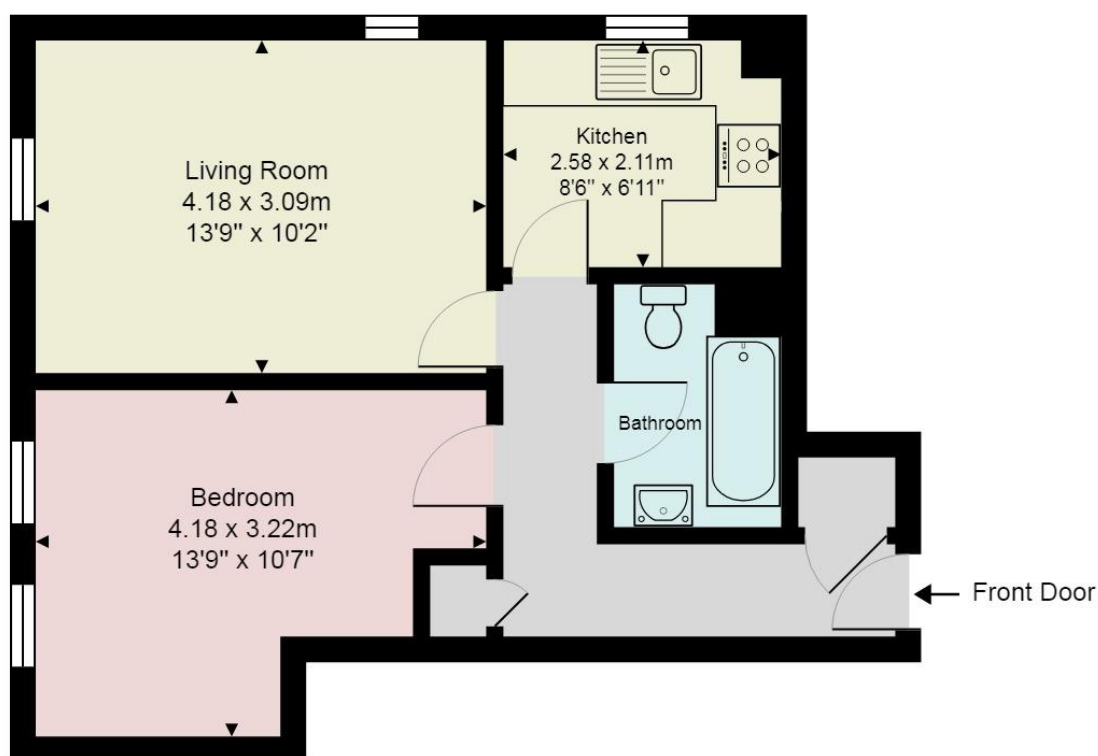
8'6" x 7'3" (2.59m x 2.21m). Range of wall and base units with inset stainless steel sink unit and worktop surfaces. Built in Electric oven, gas hob and cooker hood. Washing machine. Sash window. Extractor fan. Tiled splashback. Worcester boiler.

Bathroom

Suite comprising enclosed bath with thermostatically controlled shower over, pedestal hand basin and W.C. Radiator. Extractor fan.



Flat 10 New Belmont House, 45 Manor Mount



Gross Internal Area: 36.1 m² ... 389 ft²

All measurements are approximate and for display purposes only.