



TO LET

Quentin Road London,

£3,000 pcm

Well presented 4 bedroom
house

Available immediately





Description

Hindwoods are delighted to welcome to the market this very well presented spacious 4 bedroom house, arranged over three floors and offering bright, spacious accommodation throughout.

This three storey terraced house was built around 130 years ago in possibly one of the prettiest streets in the area. Within half a mile of Blackheath station and within a mile of Lewisham mainline and DLR stations.

The accommodation comprises:-

GROUND FLOOR

Lounge

20'6" x 10'3" (6.22m x 3.12m). Period fireplace. Two radiators.

Kitchen

12' x 8'9" (3.69m x 2.69m). Range of wall and base units with inset stainless steel sink and worktop surface. Gas hob, electric oven and cooker hood. Dishwasher. Fridge/freezer. Radiator. Door to garden.

FIRST FLOOR

Bathroom/WC

9' x 7'9" (2.72m x 2.40m). White suite with shower over bath and shower screen, low level W.C and wash basin with vanity unit under. Sash window. Cupboard housing washing machine.

Separate W.C

Low level W.C. Sash Window.

Bedroom 1

15' x 11' (4.57m x 3.35m). Original marble fireplace. Built in cupboard. Two radiators.

Bedroom 2

9'9" x 8'9" (2.96m x 2.70m). Original cast iron fireplace. Radiator.

SECOND FLOOR

Bedroom 3

15' x 11' (4.57m x 3.35m). Cast iron fireplace. Two radiators. Carpet.

Bedroom 4

9'9" x 9' (2.96m x 2.71m). Cast iron fireplace. Radiator. Cupboard in alcove.

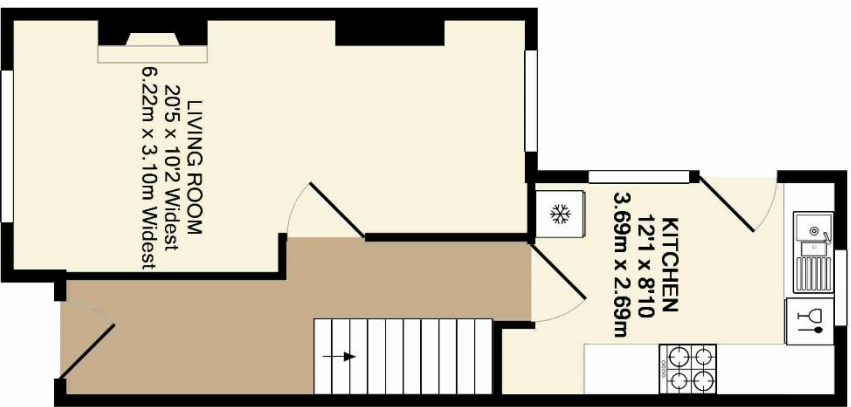
Viewings

Strictly via Hindwoods.

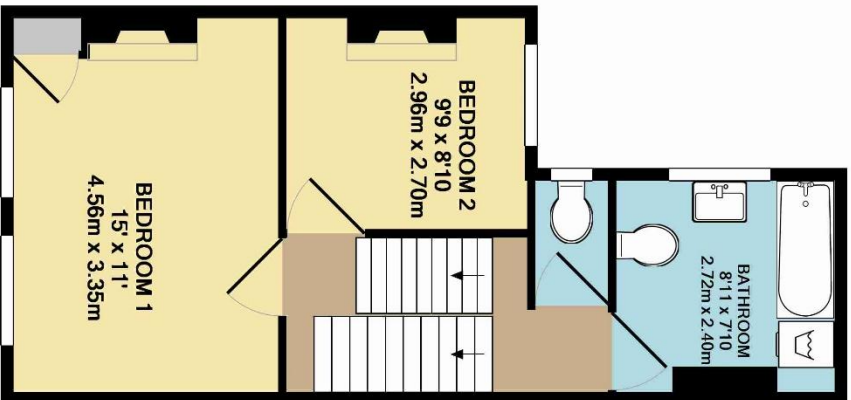
Donna Distin

D.distin@hindwoods.co.uk



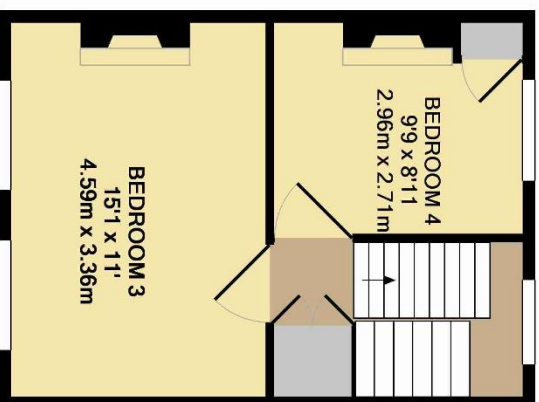


GROUND FLOOR
APPROX. FLOOR
AREA 398 SQ.FT.
(37.0 SQ.M.)



1ST FLOOR
APPROX. FLOOR
AREA 408 SQ.FT.
(37.9 SQ.M.)

TOTAL APPROX. FLOOR AREA 1114 SQ.FT. (103.5 SQ.M.)
Measurements are approximate. Not to scale. Illustrative purposes only
Made with Metrojix ©2016



2ND FLOOR
APPROX. FLOOR
AREA 308 SQ.FT.
(28.6 SQ.M.)