



FOR SALE

**Galsworthy Close,
Thamesmead,
London, SE28 8DB**
One bedroom Maisonette
£185,000





Description

Excellent investment opportunity for either a first time buyer or an investor to purchase this ideally located, spacious first floor, one bedroom maisonette.

The property offers good sized rooms throughout and benefits from gas central heating and double glazing throughout.

The property is within walking distance of all local amenities and transport links.

The accommodation consists of the following: -

Entrance

External door leading to stairs to first floor.

Bedroom

8'10" x 13'8" (2.68 x 4.16m)

Double glazing windows to rear, carpet, double radiator.

Living room

10'8" x 16'11" (3.24 x 5.15m)

Double glazing windows to rear, carpet, double radiator.



Kitchen

7'7" x 9'2" (2.30 x 2.78m)

Range of wall and base units, standalone cooker, stainless steel sink and drainer, double glazed window to front, double radiator.



Bathroom

10'4" x 13'2" (3.14 x 4.00m)

Low level WC, double glazed window, part tiled walls

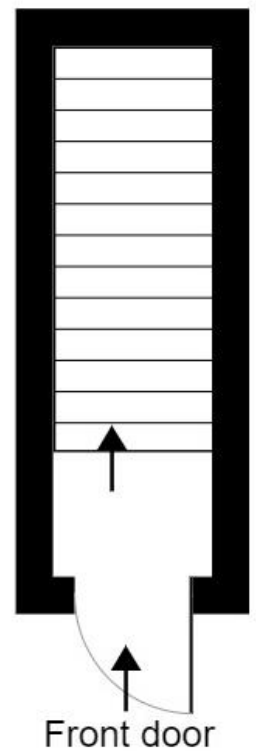
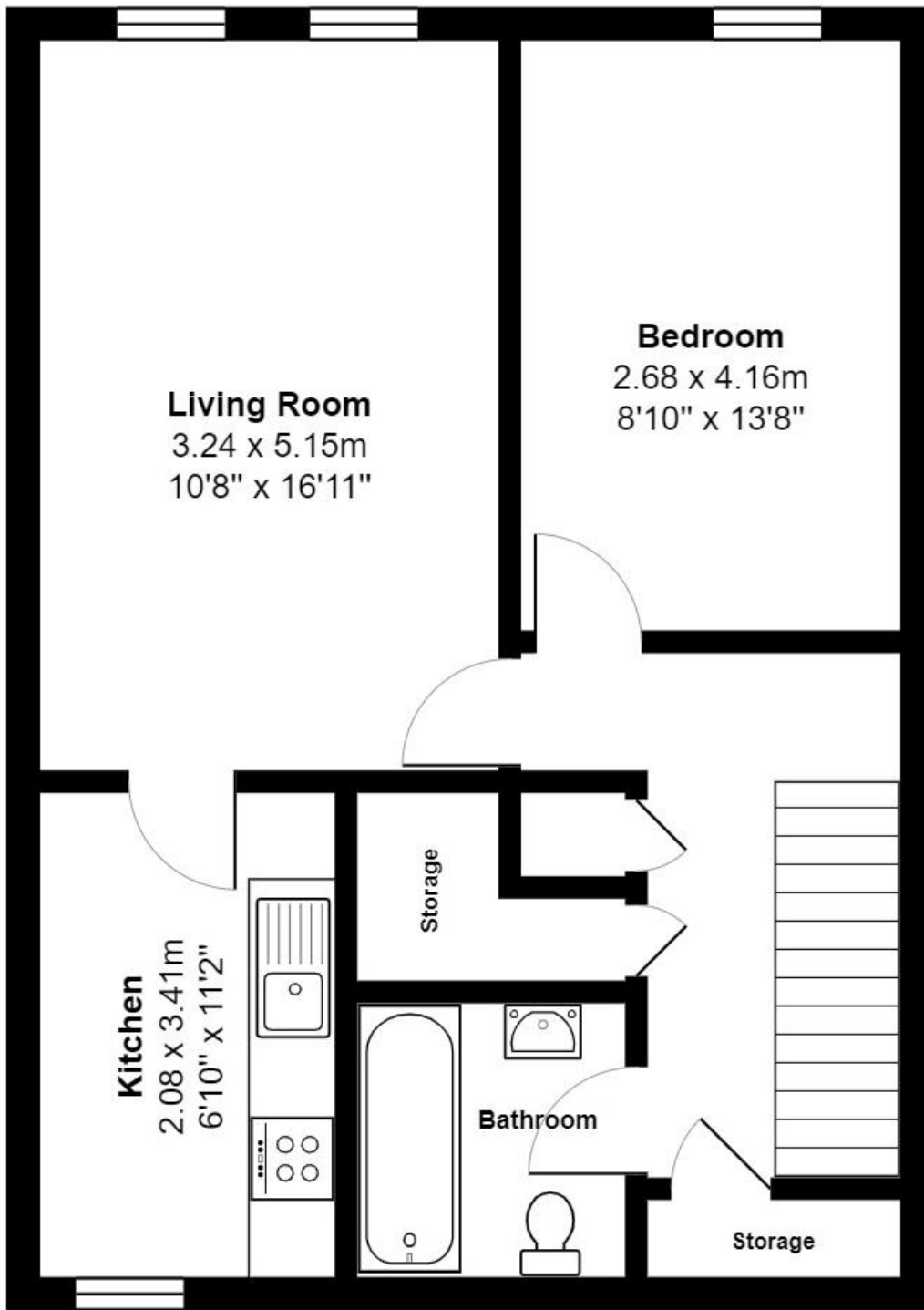
Viewings

Strictly via Hindwoods.

Donna Distin

d.distin@hindwoods.co.uk





Total Area: 56.5 m² ... 608 ft²

All measurements are approximate and for display purposes only